

FRONT SPRINGS

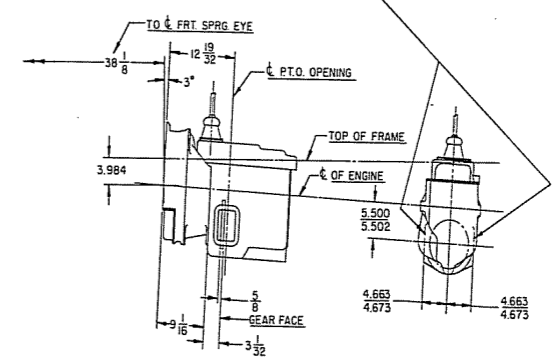
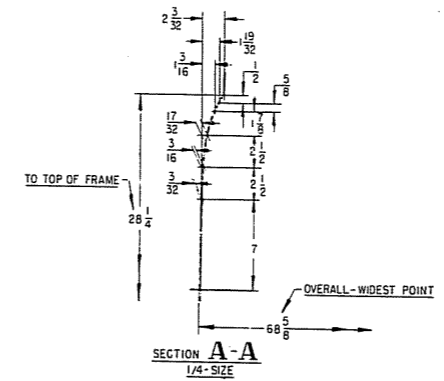
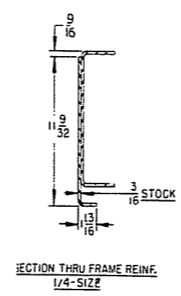
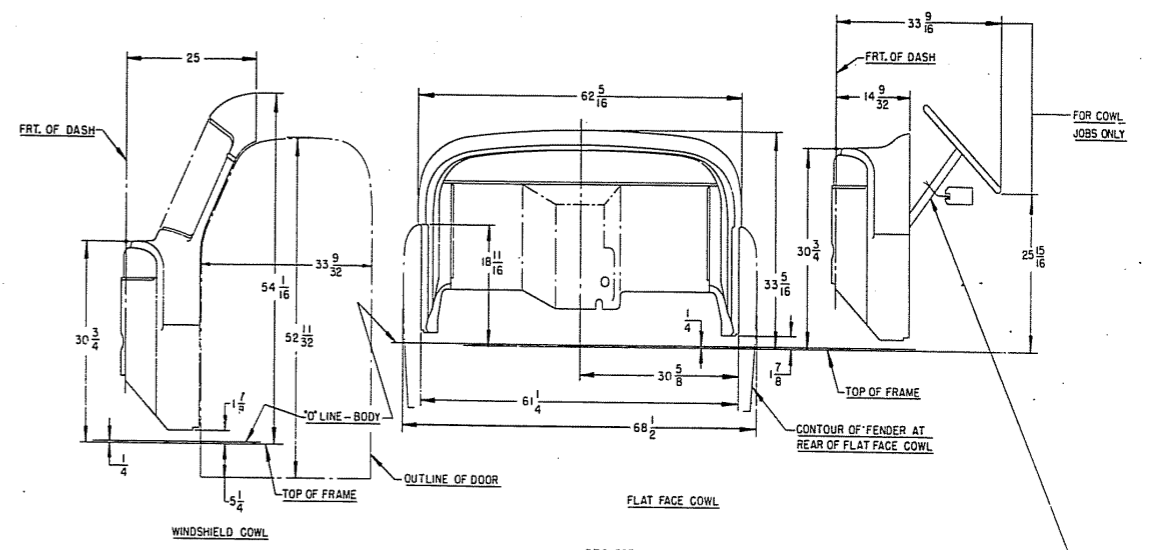
WHEELBASE	LOAD PER SPRG.	RATE PER INCH	LBS.	SPRG. N°
12 1/2	2200	579	1261058	
13 1/8	2600	796	1261161	
13 3/8	3300	979	1263037	

154 WB ONLY

190 WB ONLY

REAR SPRINGS

WHEELBASE	LOAD PER SPRG.	RATE PER INCH	LBS.	SPRG. N°
13 1/2	8500	3420	924313	
13 7/8	UP TO 4910	1785		
15 1/8	10000	3938	1267406	
	UP TO 4950	2078		

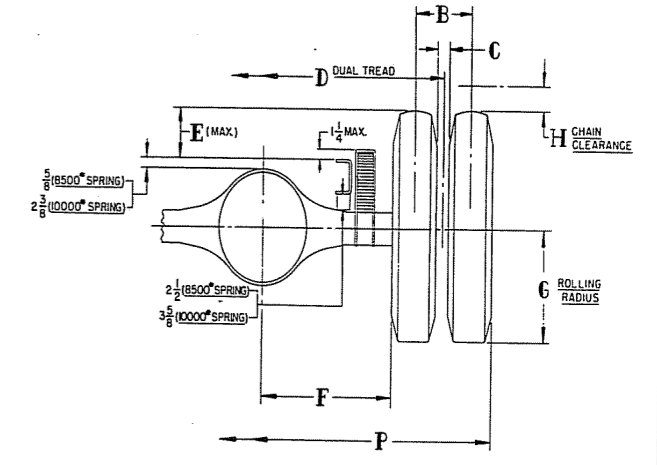


P.T.O. OPENING: S.A.E. STD. LARGE ON BOTH SIDES
 GEAR: TRANS. COUNTERSHAFT P.T.O. 43T. 6/8P. 20° P.A.
 SPEED RATIO: 481 R.P.M. TO 1000 R.P.M. (ENG.)
 SPEED RATIO (OVERDRIVE) 540 R.P.M. TO 1000 R.P.M. (ENG.)
 ROTATION: OPPOSITE ENGINE
 ENGINE SPEED GOVERNED AT 3000 R.P.M.

WARNING TO BODY BUILDERS:
 STEERING WHEEL LOCATION IS FIXED FOR STANDARD DODGE CAB SEAT, PEDALS, FLOOR AND WINDSHIELD POSITIONS. AND IS ADJUSTABLE ONLY TO A LIMITED DEGREE FOR NORMAL COMMERCIAL VARIATION OF THESE POSITIONS.
 IF NECESSARY, ADJUSTMENTS SHOULD BE MADE AT FRAME FASTENING AND AT INSTRUMENT PANEL BRACKET, TO AVOID STRAIN ON STEERING GEAR, COLUMN, OR MOUNTINGS.

5 SPEED TRANS.

TIRE SIZE	RIM SIZE	A	B	C	D	E	F	G	H	P
9.00/20	10P	20X7	69 1/2							
10.00/20	12P	20X7	69 1/2							
10.00/20	12P	20X8	68 3/4							
11.00/20	12P	20X8	68 3/4							
10.00/20	12P	20X7	11 1/2	1.31	72 7/8	8.62	25.16	19.58	4 1/2	95.43
10.00/20	12P	20X8	13	2.38	72 7/8	8.62	24.63	19.58	4 1/2	96.50
11.00/20	12P	20X8	13	1.50	72 7/8	9.22	24.18	20.10	4 1/2	97.38



SECTION SHOWING REAR AXLE IN BUMP POSITION